

mdf italia



© COPYRIGHT 2024 MDF ITALIA SRL SOCIETA' UNIPERSONALE

2023

ROCK TABLE MAXI

Designed by Jean Marie Massaud

Rock Table is a family of indoor and outdoor tables with an elegant, fluid silhouette, characterised by a solid central conical base and a thin top that appears to float. The new model features a top with an unusual and interesting shape: a rectangle with rounded corners with a physiognomy that fosters a direct relationship among those sitting around the table, facilitating interaction and dialogue.

The lightened concrete base supports a new, lightweight wooden top in bleached, dark-stained oak and Canaletto walnut. A style that combines radicality and sensuality, softness and boldness, and complements modern home environments as well as lounges, offices, rooms for entertaining or meeting people, where it leaves its own unique, bold mark.

DIMENSIONS

This table is available in two different sizes:

. L210 D105 H72

. L240 D115 H72

The height of H72 has a dimensional tolerance of +/- 1 cm. Variations are to be considered, especially for tables with concrete tops.

TABLETOP

LAQUERED

Medium density wood fibre panel, 25 mm thick, machined on the edge, and painted matt white or matt graphite grey.

CEMENT

In white or anthracite UHPFRC cement (ultra high performance, fibre reinforced cement), with high technical / structural characteristics.

STONE CHIP CEMENT

In UHPFRC (ultra high performance, fibre reinforced cement), with high technical / structural characteristics, coloured in mass using natural oxides, enhanced with a stone chip surface made up of Alpine rocks and stones (white and green stone chip top), or stone chip made up of stones from Tuscany (terracotta top).

WOOD

Panel in veneered 25 mm thick medium density wood fibre in bleached or brown-stained oak, or Canaletto walnut. The edge of the top and underside are lacquered matt white (bleached oak version) or matt graphite grey (brown or Canaletto walnut version).

MONOCHROME COMBINATIONS

WHITE VERSION

Base in natural cement, matt white tube and flange, lacquered white, white cement, bleached oak wood or white stone chip cement top.

ANTHRACITE VERSION

Base in anthracite cement, matt anthracite tube and flange, lacquered anthracite grey, brown oak wood, Canaletto walnut wood, anthracite cement, or smoked glass top.

ORANGE VERSION

Base in terracotta cement, matt orange tube and flange, terracotta stone chip cement top.

GREEN VERSION

Base in green cement, matt green tube and flange, green stone chip cement top.

OUTDOOR USE

The table with cement top and stone chip cement top are also suitable for outdoor.

Rock Table

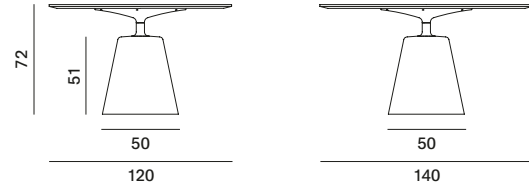
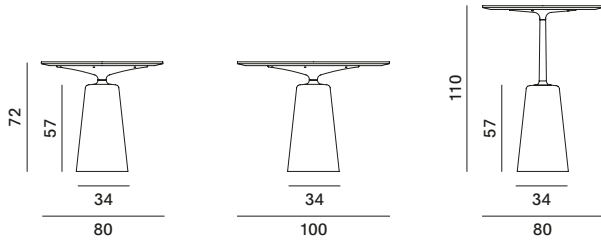


The height of H72 has a dimensional tolerance of \pm cm. Variations are to be considered, especially for tables with cement tops.

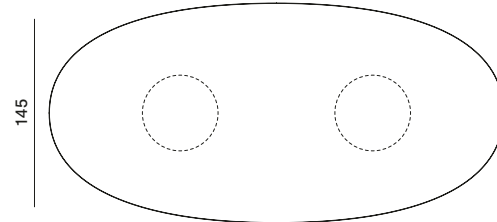
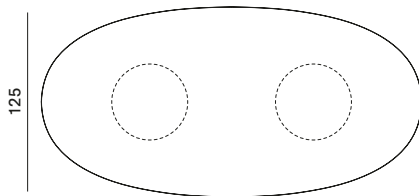
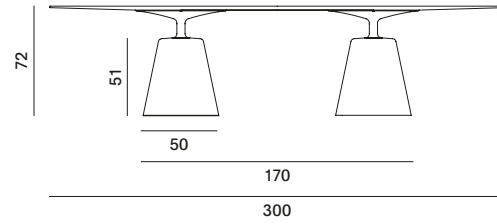
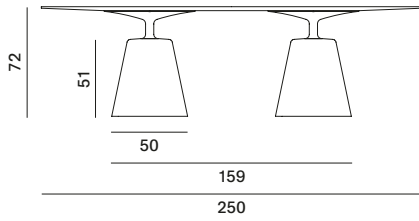
Round tables with narrow base

Round tables with wide base

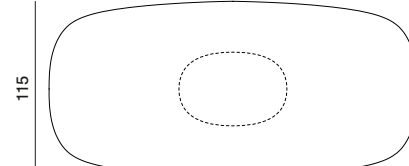
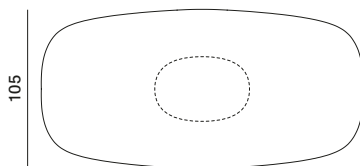
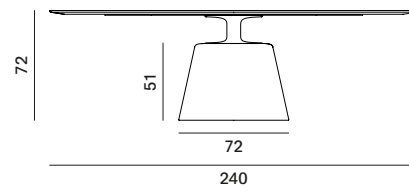
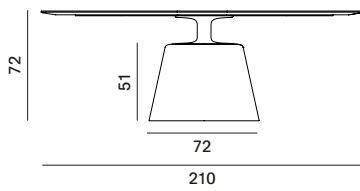
Tables with glass top are H71.5



Oval tables with double base



Maxi table



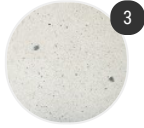
Finishing

The number in the dot corresponds to the number of colour/material finish.

Here below, in the section FINISH OPTIONS, please note all the colours of the materials used for this product.

TABLE

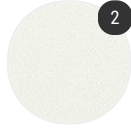
Top



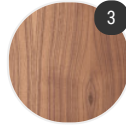
Stone chip cement



Cement



Matt lacquered



Wood

Structure

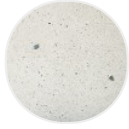


Cement

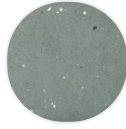
Finish options

TOP

Stone chip cement



White stone
chip cement



Green stone
chip cement

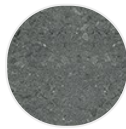


Terracotta
stone chip
cement

Cement



White cement



Anthracite
cement

Matt lacquered



Matt
lacquered
white X042



Matt
lacquered
graphite grey
X082

Wood



Canaletto
walnut



Bleached oak
X075



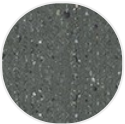
Brown oak
X076

STRUCTURE

Cement



Cement natural X080



Cement anthracite X081



Cement green



Cement terracotta